



THINK SELL SAFE

Open House Safety Strategies



KEY

Red: Realtor will be caught completely off guard if attacked.

Amber: Realtor assumes risk in this area. Realtor is unable to see threats and emergency exit can be difficult.

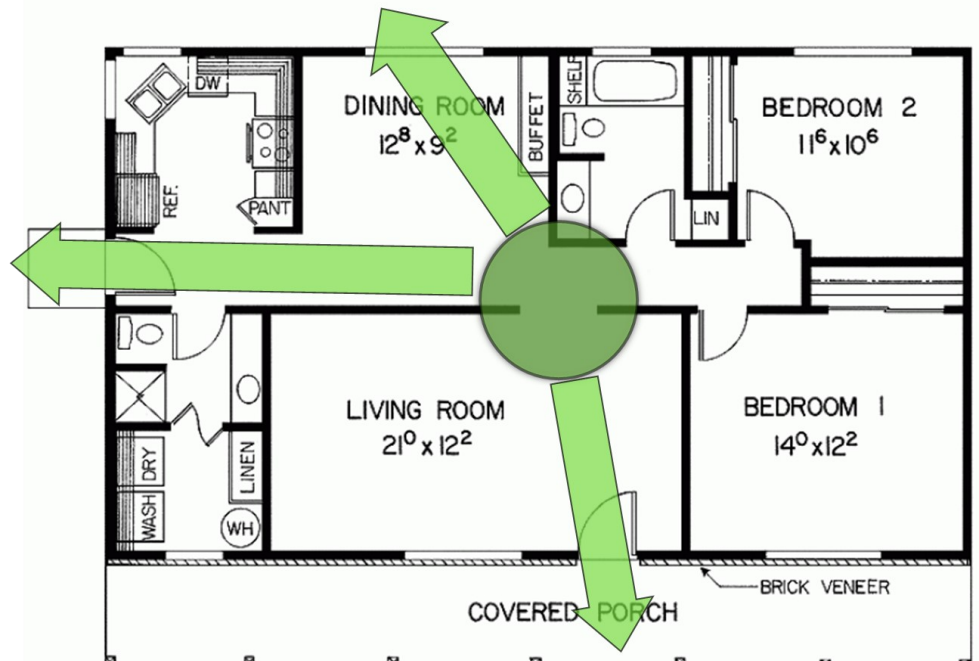
Green: Realtor can see who's coming and can readily identify threats.

REA: Realtor Engagement Area

The REA gives the Realtor a single point in the home that allows them to monitor touring guests while greeting new visitors upon entry.

REA Location

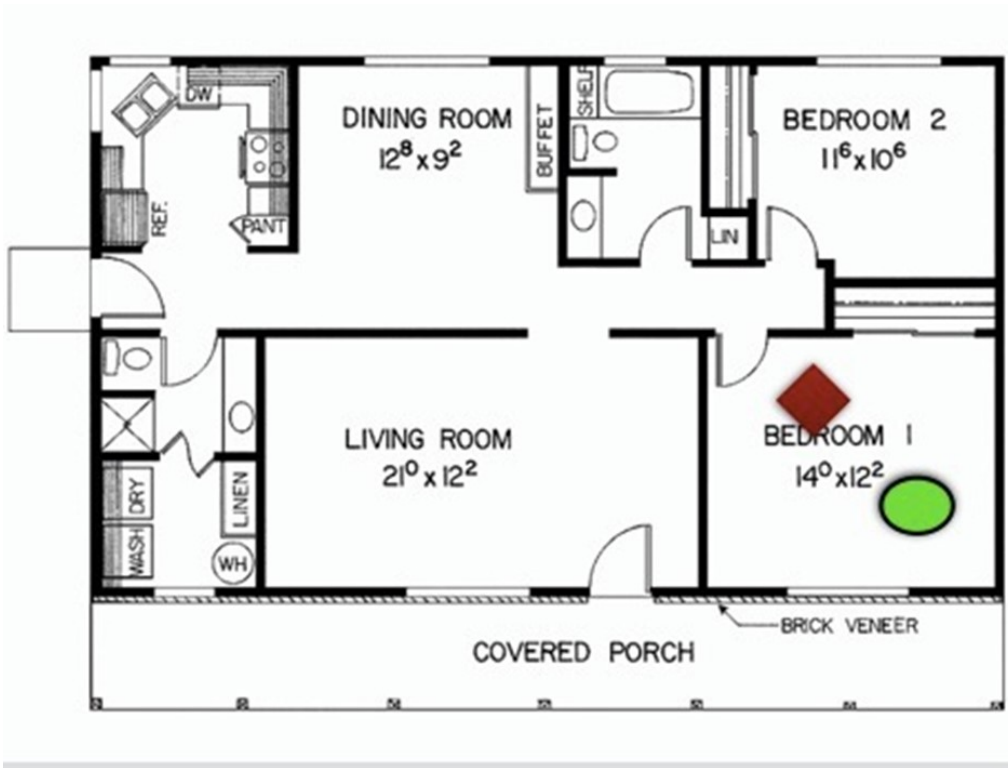
The REA is a location that is determined by the Realtor that provides unobstructed entry from the home in the event of an emergency.





THINK SELL SAFE

Open House Safety Strategies



Guests to your open house should not be between you and an exit.

Always maintain the ability to exit quickly in the event of an emergency.

