

Walton County Local Residential Market Metrics - 2016

Single Family Homes

Municipalities and Census-Designated Places*



Name of County, Municipality, or CDP*	Closed Sales	Y/Y % Chg.	Closed Sales Paid in Cash	Y/Y % Chg.	Median Sale Price	Y/Y % Chg.	Average Sale Price	Y/Y % Chg.
Walton County	2,385	5.6%	595	2.8%	\$368,759	4.6%	\$632,583	6.6%
DeFuniak Springs (City)	71	-6.6%	28	-3.4%	\$110,000	-2.7%	\$125,220	12.4%
Freeport (City)	204	87.2%	18	50.0%	\$221,801	-3.6%	\$222,363	-8.2%
Miramar Beach (CDP)	412	2.7%	131	12.9%	\$425,000	1.5%	\$545,452	0.0%
Paxton (Town)	5	66.7%	2	0.0%	\$49,000	84.9%	\$63,000	1.3%

*Florida municipalities consist of incorporated cities, towns, and villages. Florida law makes no distinction between these three types. CDPs are unincorporated communities identified and delineated each decennial U.S. Census for statistical purposes only (so their boundaries have no political meaning). Boundaries used for this report are as of Jan. 1, 2015.

Produced by Florida REALTORS® with data provided by Florida's multiple listing services. Statistics for each month compiled from MLS feeds on the 15th day of the following month. Data released on Thursday, February 9, 2017. Data revised on Monday, January 16, 2017. Next yearly data release is TBD.

Walton County Local Residential Market Metrics - 2016

Single Family Homes

Municipalities and Census-Designated Places*



Name of County, Municipality, or CDP*	Dollar Volume	Y/Y % Chg.	Pct. of Orig. List Price Received	Y/Y % Chg.	Median Time to Contract	Y/Y % Chg.	New Listings	Y/Y % Chg.
Walton County	\$1.5 Billion	12.6%	96.5%	1.3%	82 Days	-11.8%	3,140	6.3%
DeFuniak Springs (City)	\$8.9 Million	5.0%	96.2%	3.1%	49 Days	-58.1%	89	-2.2%
Freeport (City)	\$45.4 Million	71.7%	100.0%	1.5%	76 Days	-29.0%	270	72.0%
Miramar Beach (CDP)	\$224.7 Million	2.7%	93.8%	-0.5%	98 Days	-5.8%	535	-5.0%
Paxton (Town)	\$315,000	68.9%	95.2%	6.0%	112 Days	202.7%	6	-33.3%

*Florida municipalities consist of incorporated cities, towns, and villages. Florida law makes no distinction between these three types. CDPs are unincorporated communities identified and delineated each decennial U.S. Census for statistical purposes only (so their boundaries have no political meaning). Boundaries used for this report are as of Jan. 1, 2015.

Produced by Florida REALTORS® with data provided by Florida's multiple listing services. Statistics for each month compiled from MLS feeds on the 15th day of the following month. Data released on Thursday, February 9, 2017. Data revised on Monday, January 16, 2017. Next yearly data release is TBD.

Walton County Local Residential Market Metrics - 2016

Single Family Homes

Municipalities and Census-Designated Places*



Name of County, Municipality, or CDP*	New Pending Sales	Y/Y % Chg.	Pending Inventory	Y/Y % Chg.	Active Inventory	Y/Y % Chg.	Months Supply of Inventory	Y/Y % Chg.
Walton County	2,494	-1.0%	345	-2.0%	1,375	5.7%	6.9	0.0%
DeFuniak Springs (City)	79	-4.8%	8	100.0%	25	-26.5%	4.2	-22.2%
Freeport (City)	241	68.5%	52	188.9%	83	23.9%	4.9	-33.8%
Miramar Beach (CDP)	429	-0.7%	34	-10.5%	278	-6.7%	8.1	-9.0%
Paxton (Town)	7	75.0%	1	N/A	2	-50.0%	4.8	-70.0%

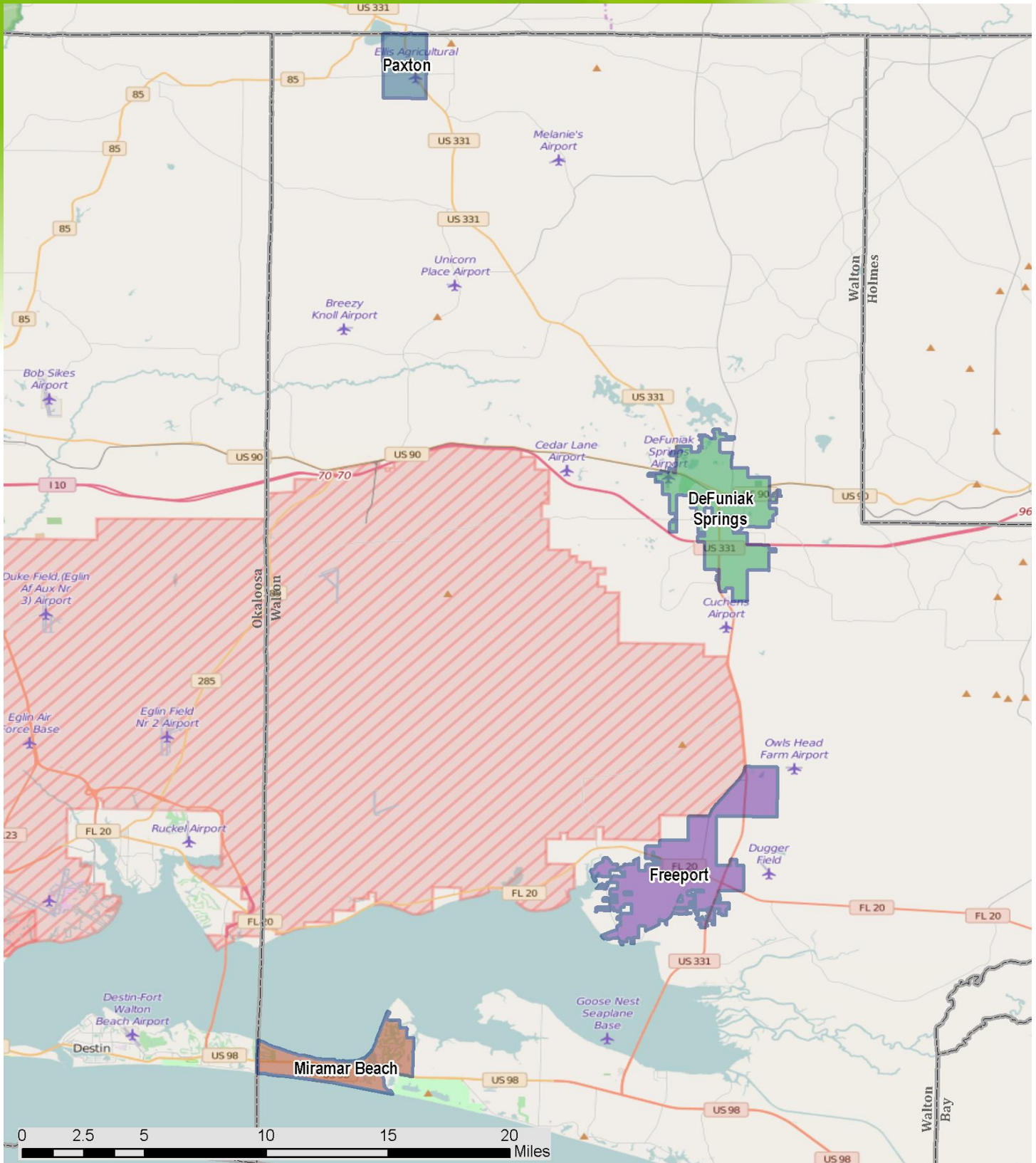
*Florida municipalities consist of incorporated cities, towns, and villages. Florida law makes no distinction between these three types. CDPs are unincorporated communities identified and delineated each decennial U.S. Census for statistical purposes only (so their boundaries have no political meaning). Boundaries used for this report are as of Jan. 1, 2015.

Produced by Florida REALTORS® with data provided by Florida's multiple listing services. Statistics for each month compiled from MLS feeds on the 15th day of the following month. Data released on Thursday, February 9, 2017. Data revised on Monday, January 16, 2017. Next yearly data release is TBD.

Walton County Local Residential Market Metrics - 2016

Reference Map

Municipalities and Census-Designated Places*



*Florida municipalities consist of incorporated cities, towns, and villages. Florida law makes no distinction between these three types. CDPs are unincorporated communities identified and delineated each decennial U.S. Census for statistical purposes only (so their boundaries have no political meaning). Boundaries used for this report are as of Jan. 1, 2015.

Produced by Florida REALTORS® with data provided by Florida's multiple listing services. Statistics for each month compiled from MLS feeds on the 15th day of the following month. Data released on Thursday, February 9, 2017. Data revised on Monday, January 16, 2017. Next yearly data release is TBD.