

Walton County Local Residential Market Metrics - Q1 2017

Single Family Homes

Municipalities and Census-Designated Places*



Name of County, Municipality, or CDP*	Closed Sales	Y/Y % Chg.	Closed Sales Paid in Cash	Y/Y % Chg.	Median Sale Price	Y/Y % Chg.	Average Sale Price	Y/Y % Chg.
Walton County	555	17.6%	150	11.1%	\$427,000	20.6%	\$695,937	14.3%
DeFuniak Springs (City)	12	-36.8%	6	0.0%	\$124,500	-4.2%	\$137,238	9.3%
Freeport (City)	47	67.9%	5	66.7%	\$215,150	9.8%	\$225,825	11.1%
Miramar Beach (CDP)	83	9.2%	27	3.8%	\$475,000	7.0%	\$667,892	13.0%
Paxton (Town)	1	N/A	1	N/A	\$24,000	N/A	\$24,000	N/A

*Florida municipalities consist of incorporated cities, towns, and villages. Florida law makes no distinction between these three types. CDPs are unincorporated communities identified and delineated each decennial U.S. Census for statistical purposes only (so their boundaries have no political meaning). Boundaries used for this report are as of Jan. 1, 2015.

Produced by Florida REALTORS® with data provided by Florida's multiple listing services. Statistics for each month compiled from MLS feeds on the 15th day of the following month.

Data released on Monday, May 15, 2017. Data revised on Monday, January 16, 2017. Next quarterly data release is Wednesday, August 9, 2017.

Walton County Local Residential Market Metrics - Q1 2017

Single Family Homes

Municipalities and Census-Designated Places*



Name of County, Municipality, or CDP*	Dollar Volume	Y/Y % Chg.	Pct. of Orig. List Price Received	Y/Y % Chg.	Median Time to Contract	Y/Y % Chg.	New Listings	Y/Y % Chg.
Walton County	\$386.2 Million	34.4%	96.0%	0.3%	102 Days	-4.7%	932	12.7%
DeFuniak Springs (City)	\$1.6 Million	-31.0%	94.3%	-5.7%	111 Days	63.2%	4	-85.7%
Freeport (City)	\$10.6 Million	86.6%	100.0%	0.2%	115 Days	35.3%	4	-93.3%
Miramar Beach (CDP)	\$55.4 Million	23.4%	93.3%	0.3%	145 Days	5.1%	9	-93.8%
Paxton (Town)	\$24,000	N/A	68.8%	N/A	81 Days	N/A	1	-66.7%

*Florida municipalities consist of incorporated cities, towns, and villages. Florida law makes no distinction between these three types. CDPs are unincorporated communities identified and delineated each decennial U.S. Census for statistical purposes only (so their boundaries have no political meaning). Boundaries used for this report are as of Jan. 1, 2015. Produced by Florida REALTORS® with data provided by Florida's multiple listing services. Statistics for each month compiled from MLS feeds on the 15th day of the following month. Data released on Monday, May 15, 2017. Data revised on Monday, January 16, 2017. Next quarterly data release is Wednesday, August 9, 2017.

Walton County Local Residential Market Metrics - Q1 2017

Single Family Homes

Municipalities and Census-Designated Places*



Name of County, Municipality, or CDP*	New Pending Sales	Y/Y % Chg.	Pending Inventory	Y/Y % Chg.	Active Inventory	Y/Y % Chg.	Months Supply of Inventory	Y/Y % Chg.
Walton County	769	17.8%	503	3.5%	1,431	1.6%	7.0	-6.7%
DeFuniak Springs (City)	14	-41.7%	3	-75.0%	18	-50.0%	3.4	-34.6%
Freeport (City)	48	-2.0%	33	-21.4%	29	-61.3%	1.6	-78.7%
Miramar Beach (CDP)	93	-13.9%	39	-36.1%	148	-52.4%	4.2	-55.8%
Paxton (Town)	1	-50.0%	1	-50.0%	1	-80.0%	2.0	-93.3%

*Florida municipalities consist of incorporated cities, towns, and villages. Florida law makes no distinction between these three types. CDPs are unincorporated communities identified and delineated each decennial U.S. Census for statistical purposes only (so their boundaries have no political meaning). Boundaries used for this report are as of Jan. 1, 2015. Produced by Florida REALTORS® with data provided by Florida's multiple listing services. Statistics for each month compiled from MLS feeds on the 15th day of the following month. Data released on Monday, May 15, 2017. Data revised on Monday, January 16, 2017. Next quarterly data release is Wednesday, August 9, 2017.

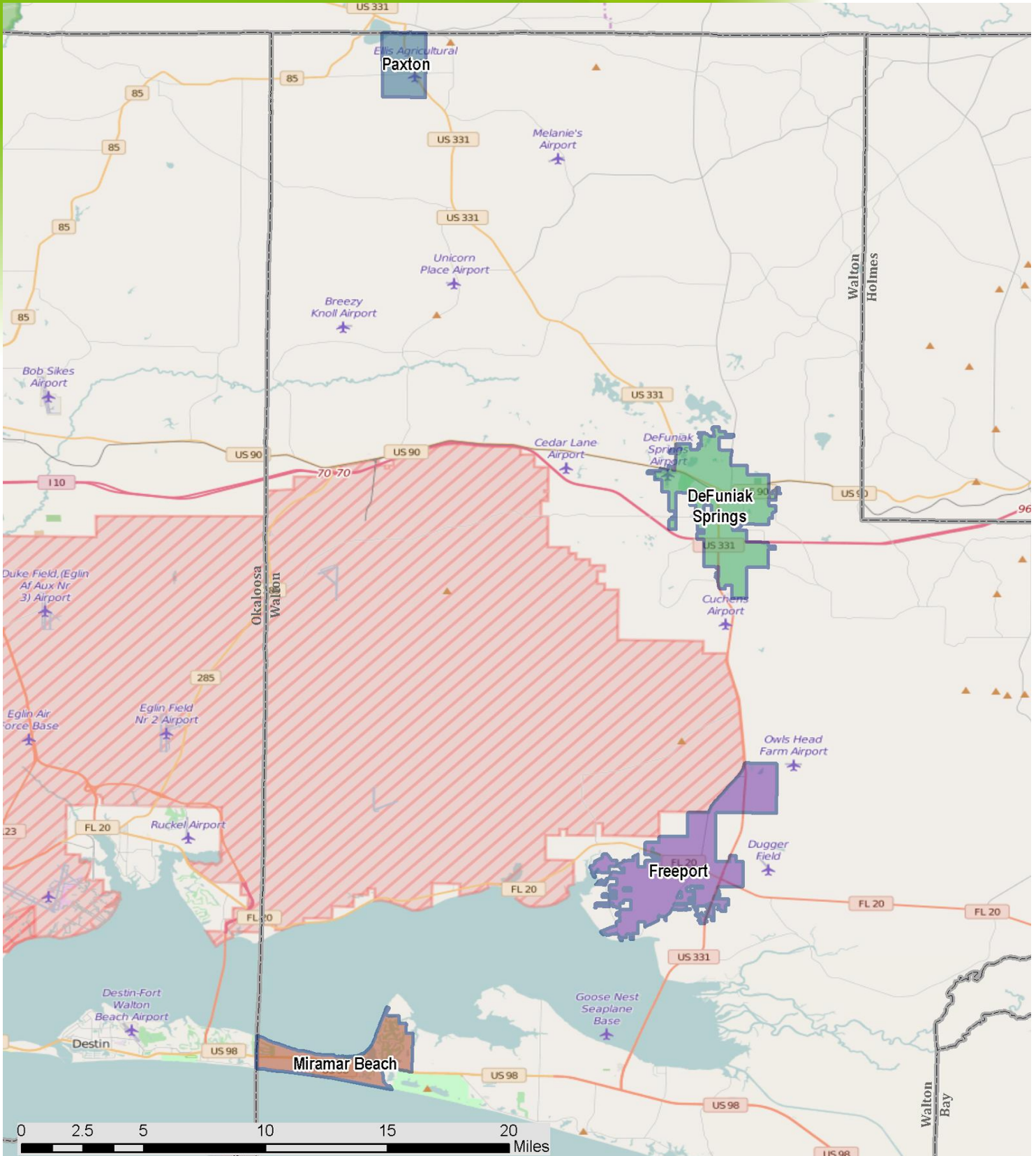
Walton County Local Residential Market Metrics - Q1 2017

Reference Map

Municipalities and Census-Designated Places*



FloridaRealtors®
The Voice for Real Estate® in Florida



*Florida municipalities consist of incorporated cities, towns, and villages. Florida law makes no distinction between these three types. CDPs are unincorporated communities identified and delineated each decennial U.S. Census for statistical purposes only (so their boundaries have no political meaning). Boundaries used for this report are as of Jan. 1, 2015. Produced by Florida REALTORS® with data provided by Florida's multiple listing services. Statistics for each month compiled from MLS feeds on the 15th day of the following month. Data released on Monday, May 15, 2017. Data revised on Monday, January 16, 2017. Next quarterly data release is Wednesday, August 9, 2017.