

# Walton County Local Residential Market Metrics - Q2 2017

## Single Family Homes

### Municipalities and Census-Designated Places\*



Name of County, Municipality, or CDP*	Closed Sales	Y/Y % Chg.	Closed Sales Paid in Cash	Y/Y % Chg.	Median Sale Price	Y/Y % Chg.	Average Sale Price	Y/Y % Chg.
Walton County	747	6.7%	210	21.4%	\$410,000	8.9%	\$718,480	12.1%
DeFuniak Springs (City)	18	-5.3%	5	-50.0%	\$138,946	73.7%	\$161,104	28.2%
Freeport (City)	80	56.9%	8	300.0%	\$242,450	12.9%	\$249,962	10.7%
Miramar Beach (CDP)	113	-14.4%	37	2.8%	\$432,500	1.8%	\$571,076	6.6%
Paxton (Town)	0	-100.0%	0	-100.0%	(No Sales)	N/A	(No Sales)	N/A

\*Florida municipalities consist of incorporated cities, towns, and villages. Florida law makes no distinction between these three types. CDPs are unincorporated communities identified and delineated each decennial U.S. Census for statistical purposes only (so their boundaries have no political meaning). Boundaries used for this report are as of Jan. 1, 2015. Produced by Florida REALTORS® with data provided by Florida's multiple listing services. Statistics for each month compiled from MLS feeds on the 15th day of the following month. Data released on Wednesday, August 9, 2017. Data revised on Monday, January 16, 2017. Next quarterly data release is Thursday, November 2, 2017.

# Walton County Local Residential Market Metrics - Q2 2017

## Single Family Homes

### Municipalities and Census-Designated Places\*



Name of County, Municipality, or CDP*	Dollar Volume	Y/Y % Chg.	Pct. of Orig. List Price Received	Y/Y % Chg.	Median Time to Contract	Y/Y % Chg.	New Listings	Y/Y % Chg.
Walton County	\$536.7 Million	19.6%	96.6%	-0.1%	86 Days	14.7%	888	-3.9%
DeFuniak Springs (City)	\$2.9 Million	21.5%	94.7%	0.0%	56 Days	55.6%	24	0.0%
Freeport (City)	\$20.0 Million	73.7%	100.0%	0.0%	86 Days	3.6%	69	4.5%
Miramar Beach (CDP)	\$64.5 Million	-8.8%	95.4%	0.4%	115 Days	4.5%	131	-15.5%
Paxton (Town)	(No Sales)	N/A	(No Sales)	N/A	(No Sales)	N/A	1	0.0%

\*Florida municipalities consist of incorporated cities, towns, and villages. Florida law makes no distinction between these three types. CDPs are unincorporated communities identified and delineated each decennial U.S. Census for statistical purposes only (so their boundaries have no political meaning). Boundaries used for this report are as of Jan. 1, 2015. Produced by Florida REALTORS® with data provided by Florida's multiple listing services. Statistics for each month compiled from MLS feeds on the 15th day of the following month. Data released on Wednesday, August 9, 2017. Data revised on Monday, January 16, 2017. Next quarterly data release is Thursday, November 2, 2017.

# Walton County Local Residential Market Metrics - Q2 2017

## Single Family Homes

### Municipalities and Census-Designated Places\*



Name of County, Municipality, or CDP*	New Pending Sales	Y/Y % Chg.	Pending Inventory	Y/Y % Chg.	Active Inventory	Y/Y % Chg.	Months Supply of Inventory	Y/Y % Chg.
Walton County	782	2.9%	503	-0.6%	1,414	-4.5%	6.7	-11.8%
DeFuniak Springs (City)	19	18.8%	10	25.0%	31	-16.2%	5.7	-8.1%
Freeport (City)	68	25.9%	66	65.0%	91	4.6%	4.1	-45.3%
Miramar Beach (CDP)	112	-15.2%	58	9.4%	254	-18.3%	7.3	-21.5%
Paxton (Town)	1	-50.0%	1	0.0%	1	-50.0%	4.0	-33.3%

\*Florida municipalities consist of incorporated cities, towns, and villages. Florida law makes no distinction between these three types. CDPs are unincorporated communities identified and delineated each decennial U.S. Census for statistical purposes only (so their boundaries have no political meaning). Boundaries used for this report are as of Jan. 1, 2015. Produced by Florida REALTORS® with data provided by Florida's multiple listing services. Statistics for each month compiled from MLS feeds on the 15th day of the following month. Data released on Wednesday, August 9, 2017. Data revised on Monday, January 16, 2017. Next quarterly data release is Thursday, November 2, 2017.

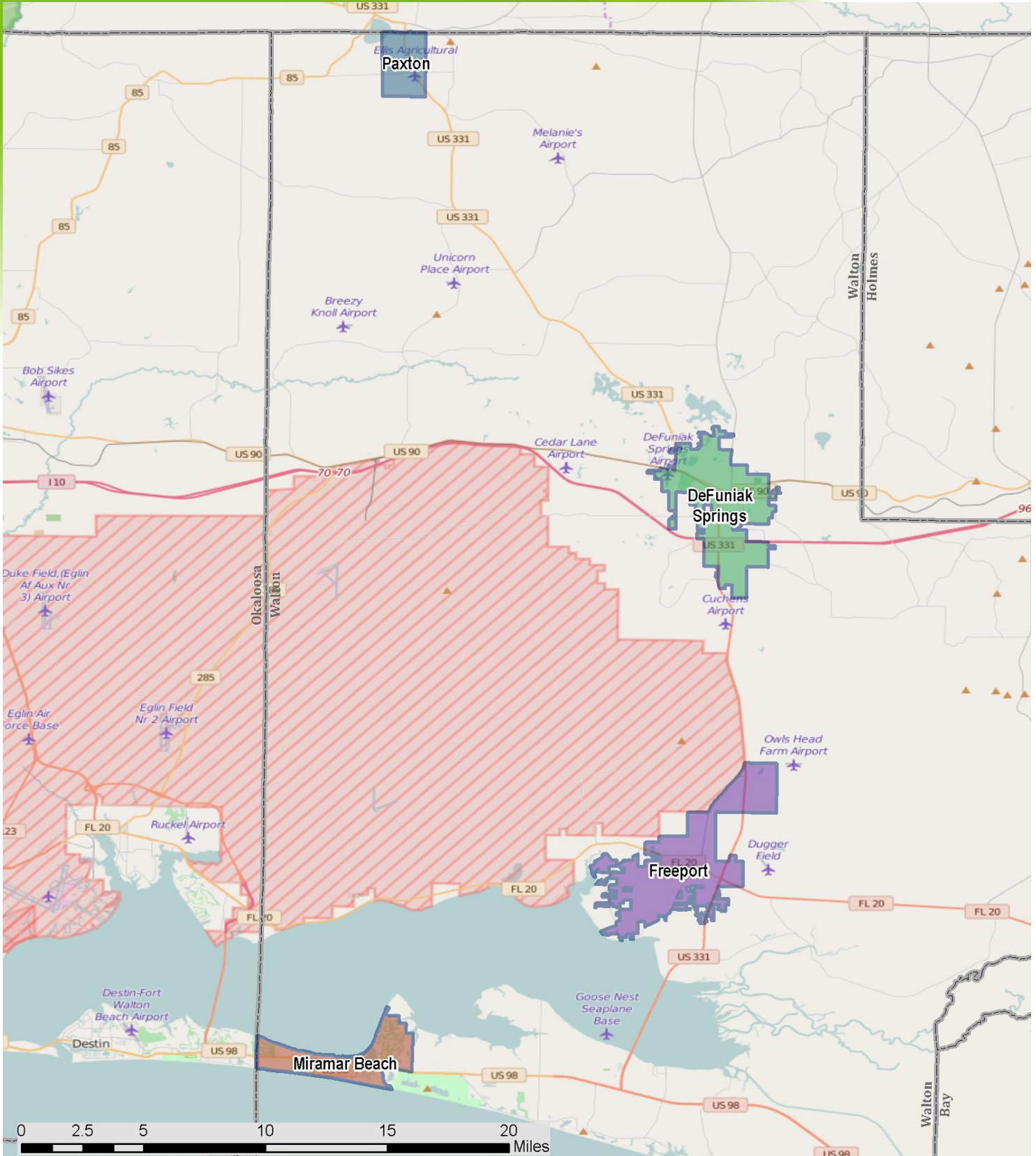
# Walton County Local Residential Market Metrics - Q2 2017

## Reference Map

### Municipalities and Census-Designated Places\*



**FloridaRealtors®**  
The Voice for Real Estate® in Florida



\*Florida municipalities consist of incorporated cities, towns, and villages. Florida law makes no distinction between these three types. CDPs are unincorporated communities identified and delineated each decennial U.S. Census for statistical purposes only (so their boundaries have no political meaning). Boundaries used for this report are as of Jan. 1, 2015. Produced by Florida REALTORS® with data provided by Florida's multiple listing services. Statistics for each month compiled from MLS feeds on the 15th day of the following month. Data released on Wednesday, August 9, 2017. Data revised on Monday, January 16, 2017. Next quarterly data release is Thursday, November 2, 2017.

# Walton County Local Residential Market Metrics - Q2 2017

## Townhouses and Condos

### Municipalities and Census-Designated Places\*



Name of County, Municipality, or CDP*	Closed Sales	Y/Y % Chg.	Closed Sales Paid in Cash	Y/Y % Chg.	Median Sale Price	Y/Y % Chg.	Average Sale Price	Y/Y % Chg.
Walton County	258	7.1%	104	4.0%	\$344,450	7.6%	\$476,258	11.5%
DeFuniak Springs (City)	0	N/A	0	N/A	(No Sales)	N/A	(No Sales)	N/A
Freeport (City)	0	N/A	0	N/A	(No Sales)	N/A	(No Sales)	N/A
Miramar Beach (CDP)	165	6.5%	67	-10.7%	\$305,000	-2.9%	\$359,035	-2.3%
Paxton (Town)	0	N/A	0	N/A	(No Sales)	N/A	(No Sales)	N/A

\*Florida municipalities consist of incorporated cities, towns, and villages. Florida law makes no distinction between these three types. CDPs are unincorporated communities identified and delineated each decennial U.S. Census for statistical purposes only (so their boundaries have no political meaning). Boundaries used for this report are as of Jan. 1, 2015. Produced by Florida REALTORS® with data provided by Florida's multiple listing services. Statistics for each month compiled from MLS feeds on the 15th day of the following month. Data released on Wednesday, August 9, 2017. Data revised on Monday, January 16, 2017. Next quarterly data release is Thursday, November 2, 2017.

# Walton County Local Residential Market Metrics - Q2 2017

## Townhouses and Condos

### Municipalities and Census-Designated Places\*



Name of County, Municipality, or CDP*	Dollar Volume	Y/Y % Chg.	Pct. of Orig. List Price Received	Y/Y % Chg.	Median Time to Contract	Y/Y % Chg.	New Listings	Y/Y % Chg.
Walton County	\$122.9 Million	19.4%	94.8%	0.2%	71 Days	-31.1%	323	3.9%
DeFuniak Springs (City)	(No Sales)	N/A	(No Sales)	N/A	(No Sales)	N/A	0	N/A
Freeport (City)	(No Sales)	N/A	(No Sales)	N/A	(No Sales)	N/A	0	N/A
Miramar Beach (CDP)	\$59.2 Million	4.0%	94.5%	0.4%	83 Days	-46.5%	208	10.1%
Paxton (Town)	(No Sales)	N/A	(No Sales)	N/A	(No Sales)	N/A	0	N/A

\*Florida municipalities consist of incorporated cities, towns, and villages. Florida law makes no distinction between these three types. CDPs are unincorporated communities identified and delineated each decennial U.S. Census for statistical purposes only (so their boundaries have no political meaning). Boundaries used for this report are as of Jan. 1, 2015. Produced by Florida REALTORS® with data provided by Florida's multiple listing services. Statistics for each month compiled from MLS feeds on the 15th day of the following month. Data released on Wednesday, August 9, 2017. Data revised on Monday, January 16, 2017. Next quarterly data release is Thursday, November 2, 2017.

# Walton County Local Residential Market Metrics - Q2 2017

## Townhouses and Condos

### Municipalities and Census-Designated Places\*



Name of County, Municipality, or CDP*	New Pending Sales	Y/Y % Chg.	Pending Inventory	Y/Y % Chg.	Active Inventory	Y/Y % Chg.	Months Supply of Inventory	Y/Y % Chg.
Walton County	265	0.0%	119	-10.5%	600	-8.4%	8.1	-16.5%
DeFuniak Springs (City)	0	N/A	0	N/A	0	N/A	0.0	N/A
Freeport (City)	0	N/A	0	N/A	0	N/A	0.0	N/A
Miramar Beach (CDP)	167	-13.0%	59	-24.4%	417	-7.1%	8.6	-14.0%
Paxton (Town)	0	N/A	0	N/A	0	N/A	0.0	N/A

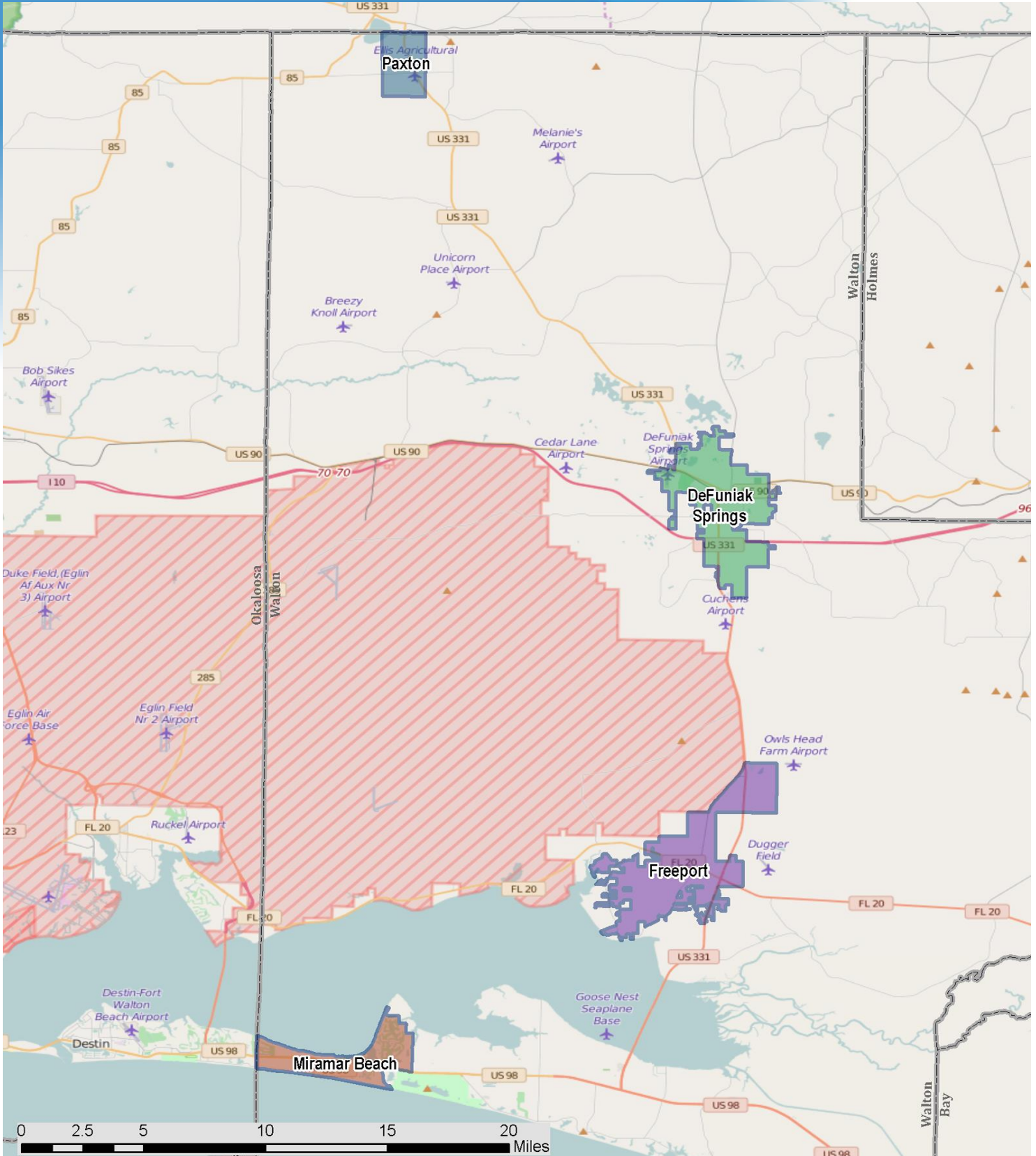
\*Florida municipalities consist of incorporated cities, towns, and villages. Florida law makes no distinction between these three types. CDPs are unincorporated communities identified and delineated each decennial U.S. Census for statistical purposes only (so their boundaries have no political meaning). Boundaries used for this report are as of Jan. 1, 2015. Produced by Florida REALTORS® with data provided by Florida's multiple listing services. Statistics for each month compiled from MLS feeds on the 15th day of the following month. Data released on Wednesday, August 9, 2017. Data revised on Monday, January 16, 2017. Next quarterly data release is Thursday, November 2, 2017.



# Walton County Local Residential Market Metrics - Q2 2017

## Reference Map

### Municipalities and Census-Designated Places\*



\*Florida municipalities consist of incorporated cities, towns, and villages. Florida law makes no distinction between these three types. CDPs are unincorporated communities identified and delineated each decennial U.S. Census for statistical purposes only (so their boundaries have no political meaning). Boundaries used for this report are as of Jan. 1, 2015. Produced by Florida REALTORS® with data provided by Florida's multiple listing services. Statistics for each month compiled from MLS feeds on the 15th day of the following month. Data released on Wednesday, August 9, 2017. Data revised on Monday, January 16, 2017. Next quarterly data release is Thursday, November 2, 2017.